

Ellen's
HEADWEAR

Ellen's
HEADWEAR

ellen
wille
THE HAIR YOU LOVE

www.ellen-wille.de



OnTop

OnTop

Nichts geht über Headwear! Sie ist die Krone der modischen Accessoires und eine der schönsten Möglichkeiten, um die Persönlichkeit zu unterstreichen. In unserem aktuellen Katalog finden Sie Kopfbedeckungen für alle Jahreszeiten und Gelegenheiten. Von mondänen Hüten über modische Mützen bis hin zu wandlungsfähigen Caps und prächtigen Tüchern. Entdecken Sie neue Modelle und „On Top“ frische Farben und aktuelle Trendmuster! Setzen Sie Akzente auf Augenhöhe!

Nothing beats headwear! It is the highlight of fashion accessories and one of the most beautiful ways to bring out your personality. In our current catalogue, you will find headwear for all seasons and occasions. From sophisticated hats to fashionable turbans, and from versatile caps to magnificent scarves. Discover new models, fresh colors and current trendy patterns! Put the spotlight on accents at eye level!



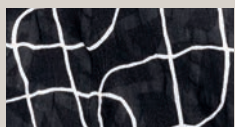
Ellen Worne



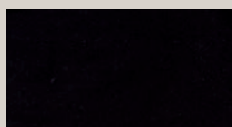
MISU COLOURS:



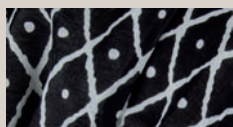
Ellen's MISU



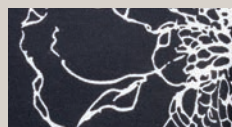
black abstract ^C



black ^A



black white ^C



black flower ^D



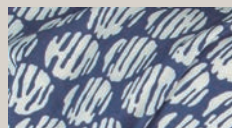
marine ^D



honeycomb blue ^C



blue white ^D



lilac white ^C



white blue ^A



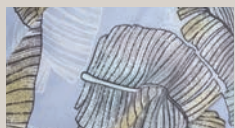
white flower ^D



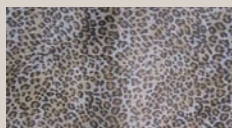
leaves ^A



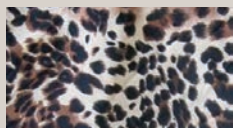
flower field ^C



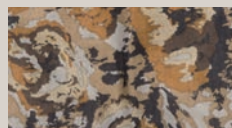
liquala lightblue ^A



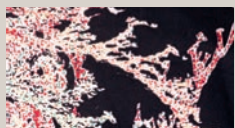
leo ^B



leopard ^B



safari ^C



black coral ^D



nature coral ^D



red ^A

^A 100% Viscose / ^B 80% Polyester, 20% Cotton / ^C 100% Cotton

^D Shell: 100% Viscose, Lining: 100% Cotton

colour: white blue



Ellen's DORY

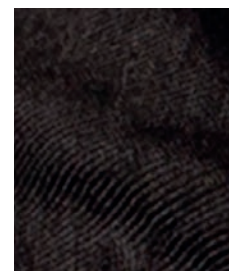
DORY COLOURS:



taupe



grey



black



95% Bamboo Viscose,
5% Elastane

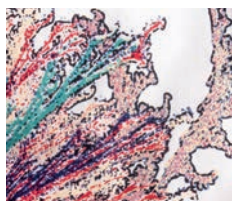


colour: taupe

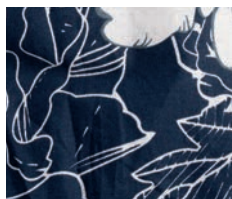
colour: nature coral



LONATA COLOURS:



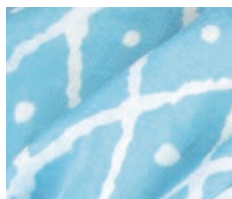
nature coral ^B



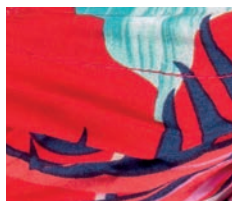
flower blue ^A



white blue ^A



sky blue ^A



red ^B

Charmant in jeglicher Hinsicht. Variabel durch abnehmbaren Schild.

Charming in so many ways. Variable styling thanks to the removable shield.

^A 80% Cotton, 20% Linen / ^B 80% Viscose, 20% Linen

Ellen's LONATA





Ellen's
MAVA

colour: white



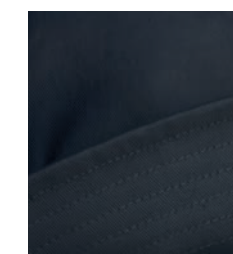
MAVA COLOURS:



white



creme



black

50% Cotton,
50% Linen

Colours



colour: creme



colour: black

Ellen's CAPANA



CAPANA COLOUR: creme



CAPANA COLOUR: black



CAPANA COLOUR: sand

50% Cotton,
50% Linen





95 % Bamboo Viscose, 5 % Elastane



colour: taupe

Colours

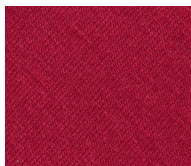


colour: dark blue

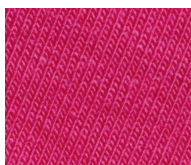


colour: raspberry

EASY COMFORT COLOURS:



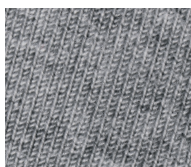
wine red



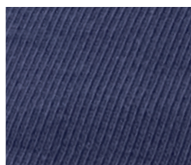
raspberry



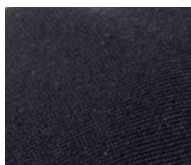
taupe



grey



dark blue



black

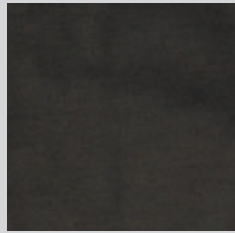


colour: grey

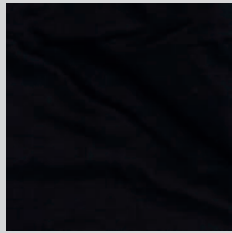
EASY FIT COLOURS:



Ellen's
EASY FIT



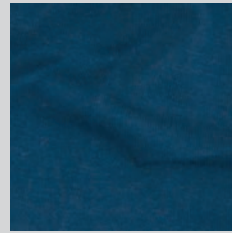
braun ^B



schwarz ^B



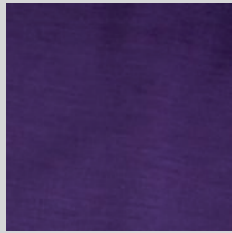
grau ^B



marine ^B



türkis ^B



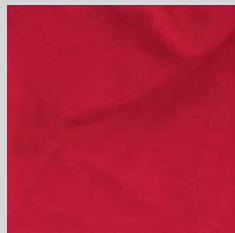
purple ^B



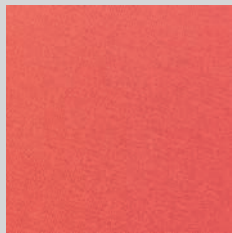
brombeere ^B



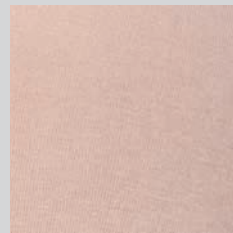
bordeaux ^{A B}



rot ^B



coral ^B



rose ^B



beige ^B

^A 98% Cotton, 2% Elastane / ^B 95% Cotton, 5% Elastane

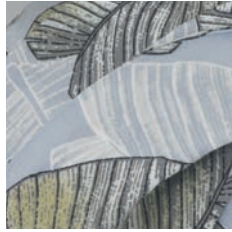


colour: braun

colour: liquala light blue



AMA FINA COLOURS:



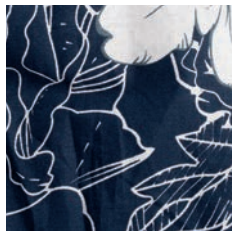
liquala light blue **A**



leaves **A**



black abstract **B**



flower blue **B**

A 100% Viscose

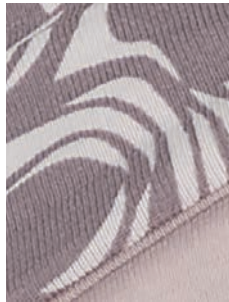
B 100% Cotton



Ellen's
AMA FINA

Ellen's AMA

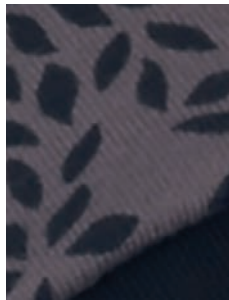
AMA COLOURS:



powder rose



triangle blue



taupe black



print grey



95% Cotton, 5% Elastane

colour: powder rose

Double your
colour options.
Wear reverse!



Ellen's PARIS

PARIS COLOURS:



marmor rose ^A



bordeaux ^A

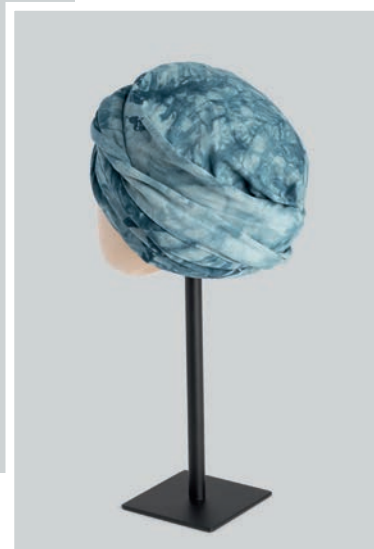


aqua multi ^B



marmor petrol ^A

colour: marmor petrol



^A 95% Cotton, 5% Elastane / ^B 80% Cotton, 20% Silk

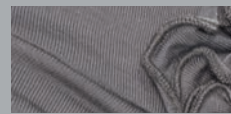
LYRA COLOURS:



coral



purple



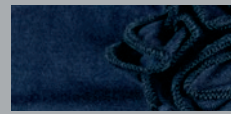
taupe



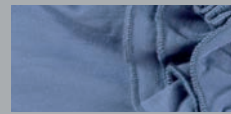
petrol



agate



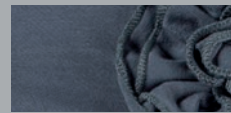
marine



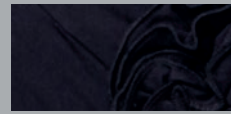
jeans blue



light blue



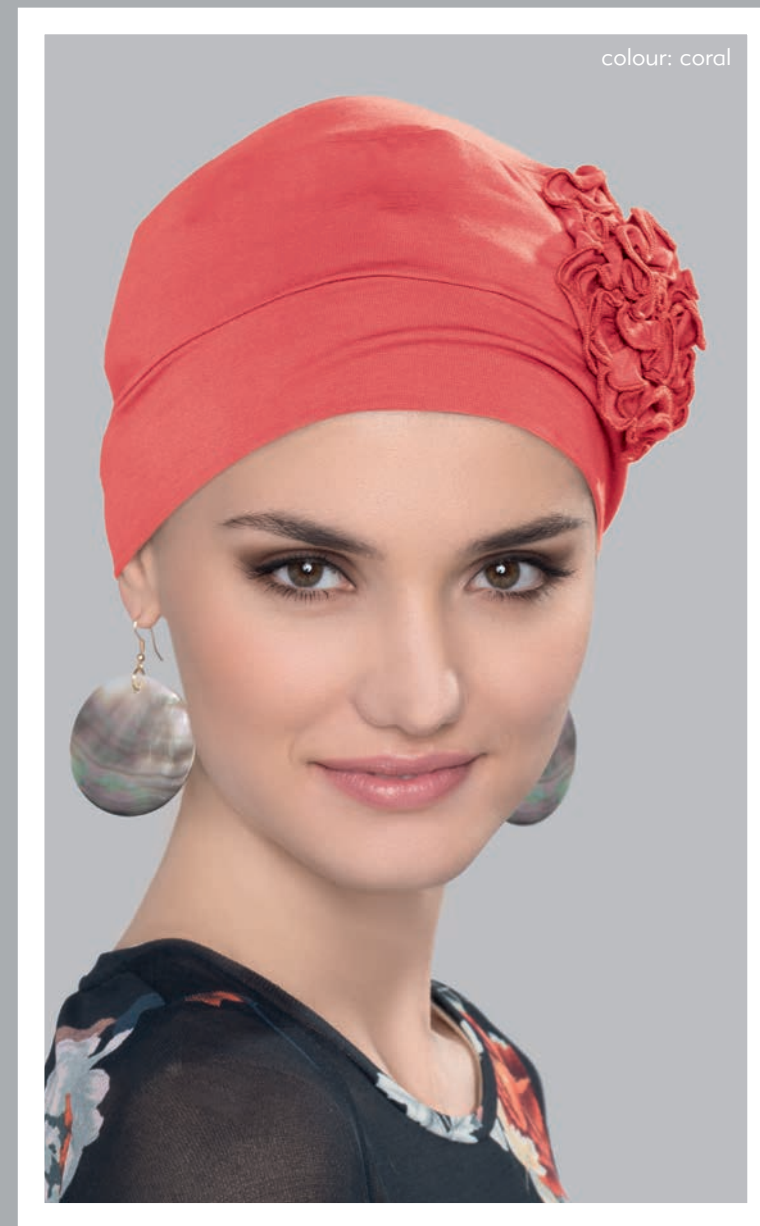
grey



black

Ellen's LYRA

colour: coral



95% Bamboo Viscose, 5% Elastane



Ellen's
SCARFS

Fine nuances
of good taste



Ellen's
NIABI
SCARF



Style Tip:

TALA (jeans) combined with scarf NIABI (azur).

60% Linen,
40% Modal

Size: approx. 180 x 65 cm

SCARFS COLOURS:



safari



azur



NIABI COLOUR: safari

Ellen's
TOGA
 SCARF



Style Tip:

Cap CAPANA (creme)
 combined with scarf
 TOGA (apricot black).

- Ⓐ 50% Cotton, 50% Silk
- Ⓑ 70% Cotton, 30% Silk

Size: approx. 175 x 65 cm



night sky Ⓑ

aqua royal blue multi Ⓑ

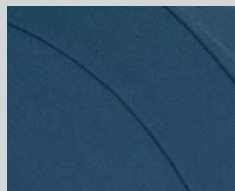
apricot black Ⓐ

fuchsia sky blue Ⓐ

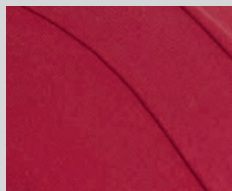
TALA BAMBOO COLOURS:



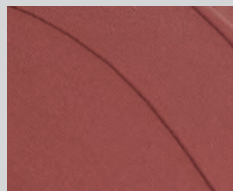
Ellen's
TALA
BAMBOO



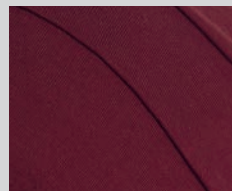
jeans



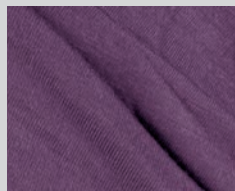
red



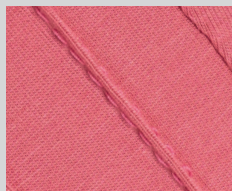
coral



burgundy



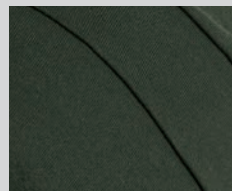
aubergine



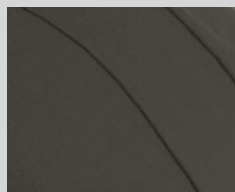
antik pink



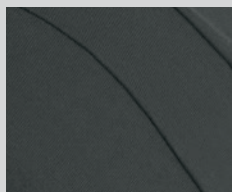
khaki



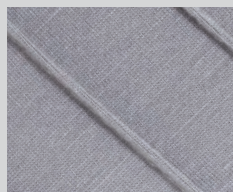
olive



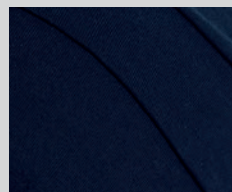
taupe



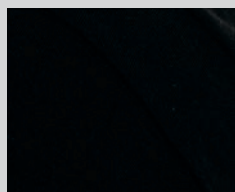
grey



light grey



marine



black



95 % Bamboo Viscose, 5 % Elastane

colour: red



TALA COLOURS:



black ^C



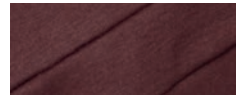
olive ^B



coffee ^C



taupe ^B



chocolate ^B



dark red ^B



coral ^B



sand ^B



pink ^B



plum ^B



aubergine ^D



antik pink ^B



azur blue ^D



jeans ^B



petrol ^B



mint ^B



ocean ^B



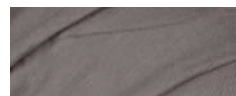
marine ^B



night blue ^B



grey ^B



smoke ^B



light grey ^B



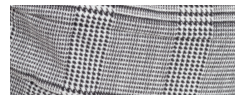
nature melange ^B



karo beige ^B



triangle grey ^B



black white ^B



ethno ^E



ornament black ^E



black grey ^B



flora blue ^E



flora taupe ^E



flora red ^B



letters coral ^E



navy look ^A

- ^A 100% Cotton
- ^B 95% Cotton, 5% Elastane
- ^C 50% Cotton, 50% Polyester
- ^D 95% Viscose, 5% Elastane
- ^E 95% Polyester, 5% Elastane



colour: olive

colour: blue white



Ellen's MEDA



A 95 % Bamboo Viscose, 5 % Elastane

Shell:

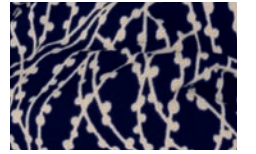
B 96 % Polyester, 4 % Elastane

C 91 % Acrylic, 9 % Wool

Lining:

D 95 % Bamboo Viscose, 5 % Elastane

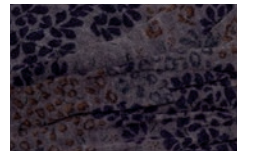
MEDA COLOURS:



blue white **B** **D**



fire mix **B** **D**



taupe mix **C** **D**



marine **A**



bordeaux **A**



black **A**



grey **A**

AVANI COLOURS:



black



silver



raspberry

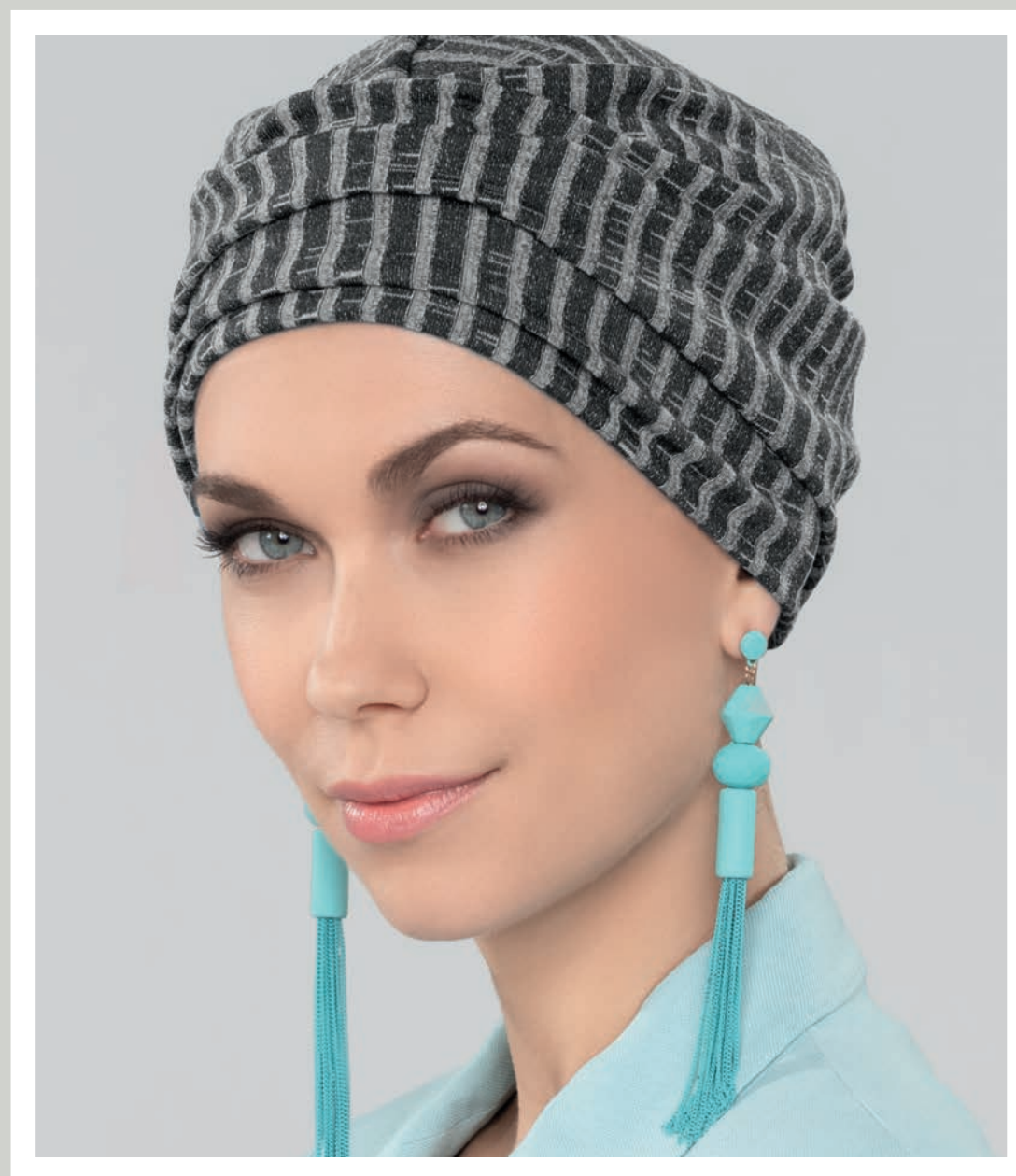


antik pink



Cap: 55% Viscose, 40% Polyester, 5% Elastane
Lining: 95% Bamboo Viscose, 5% Elastane

Ellen's
AVANI



colour: black

colour: marine

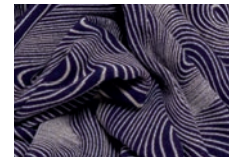


Ellen's MALOU

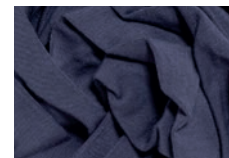
MALOU COLOURS:



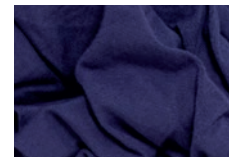
bordeaux ^A



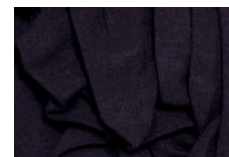
blue wave ^C



blue grey ^A



marine ^A



black ^A



colour: bordeaux

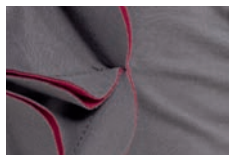
- ^A 95% Bamboo Viscose, 5% Elastane
- ^B 95% Bamboo Viscose, 5% Spandex
- ^C **Shell:** 53% Viscose, 44% Polyester, 3% Elastane
Lining: 95% Bamboo Viscose, 5% Elastane

Ellen's MORA

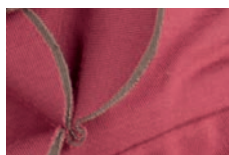
MORA COLOURS:



grey melange



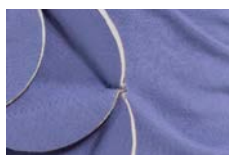
taupe



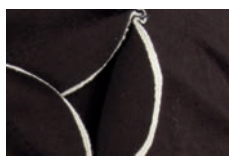
wine red



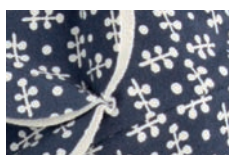
marine



jeans



black



disty mussel

colour: grey melange



95 % Bamboo Viscose, 5 % Elastane



colour: marine

colour: purple



ANOKI COLOURS:



purple **B**



dark red **B**



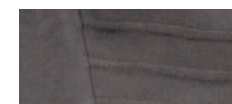
coral **B**



antik pink **B**



chocolate **B**



taupe **B**



marine **B**



black **A** / **B**



grey **B**



light grey **B**

Ellen's ANOKI

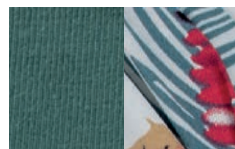


A 95 % Viscose, 5 % Elastane / **B** 95 % Bamboo Viscose, 5 % Elastane

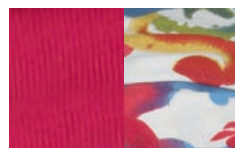
colour: raspberry



GARBO COLOURS:



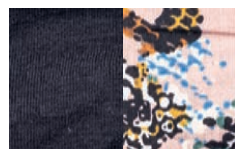
khaki ^A



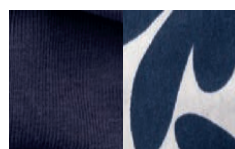
pink ^A



raspberry ^B



black ^B



night blue ^B



olive ^C

^A **Cap:** 95% Cotton, 5% Elastane / **Ribbon:** 100% Viscose

^B **Cap:** 95% Cotton, 5% Elastane / **Ribbon:** 80% Viscose, 20% Polyamide

^C **Cap:** 95% Cotton, 5% Elastane / **Ribbon:** 100% Cotton

colour: khaki



Ellen's
GARBO

colour: taupe



MAGENA COLOURS:



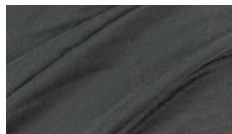
taupe



burgundy



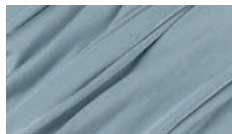
antic pink



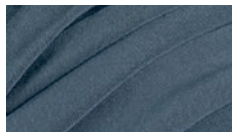
grey



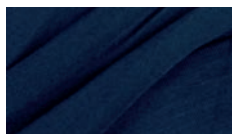
khaki



ice blue



jeans



marine



95 % Bamboo Viscose, 5 % Elastane

Ellen's MAGENA



colour: burgundy

Ellen's LULU



LULU COLOURS:



black white **B**



blue beige **C**



disty mussel **A**



marine **A**



jeans **A**



lavender **A**



taupe beige **A**

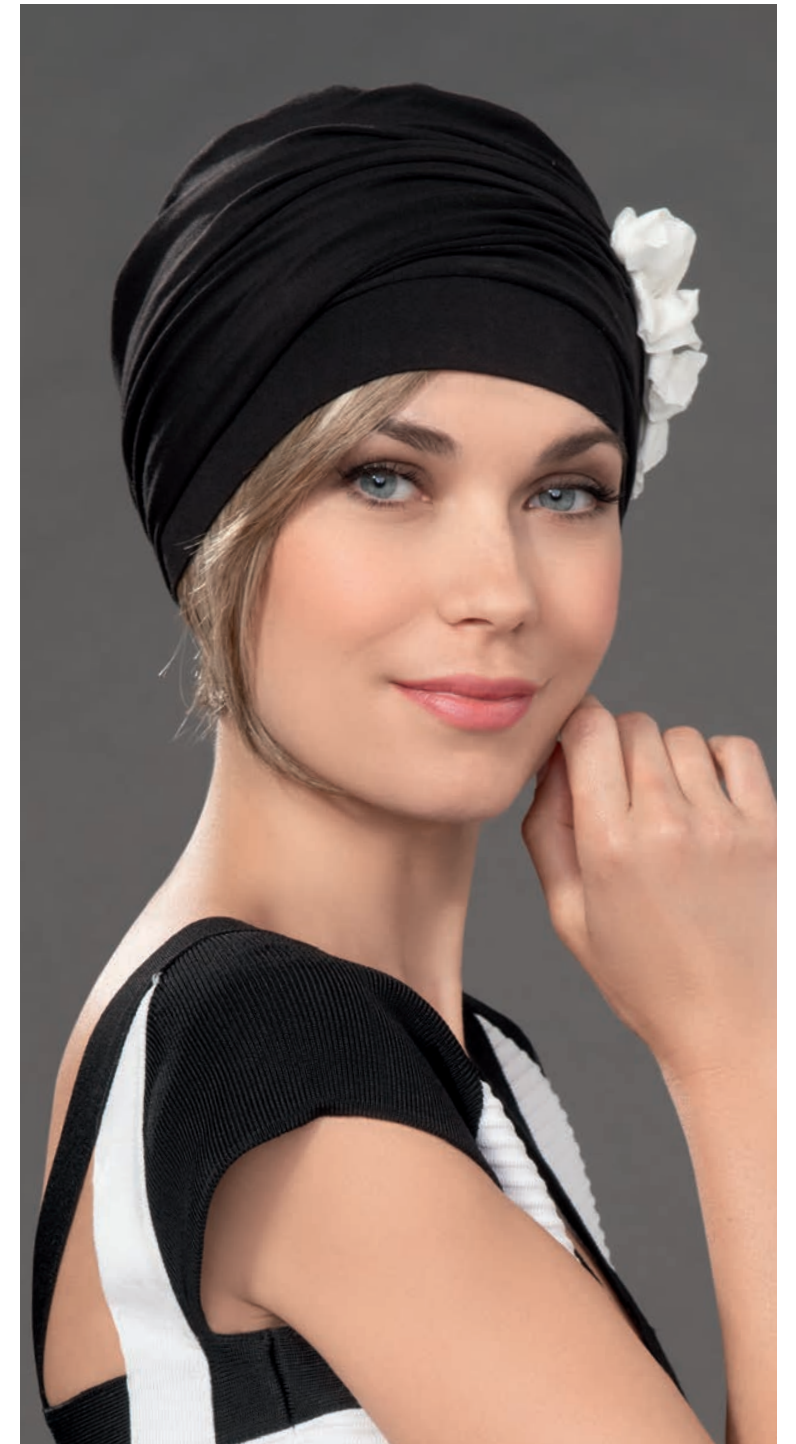


wine red **A**



hot coral **A**

colour: black white



A 95% Bamboo Viscose, 5% Elastane

B 95% Bamboo Viscose, 5% Spandex

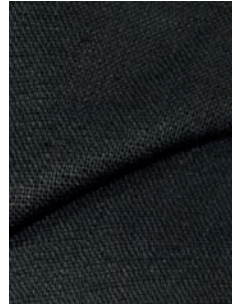
C Shell: 96% Polyester, 4% Elastane

Lining: 95% Bamboo Viscose, 5% Elastane

colour: olive



TADEA COLOURS:



black



marine



jeans blue



olive

Shell: 70% Cotton, 30% Linen
Lining: 95% Bamboo Viscose, 5% Elastane

Colours



colour: marine



colour: jeans blue

Ellen's TADEA



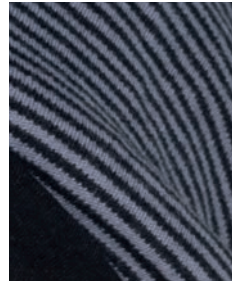
colour: black

colour: black white

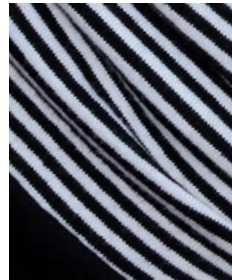


95% Cotton, 5% Elastane

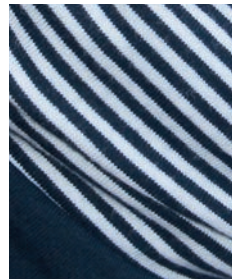
KIONA COLOURS:



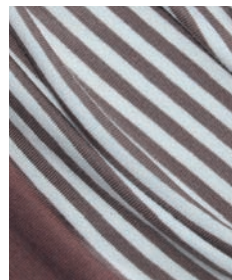
black grey



black white



marine white



beige white

colour: black grey



Ellen's
KIONA

ELSA COLOURS:

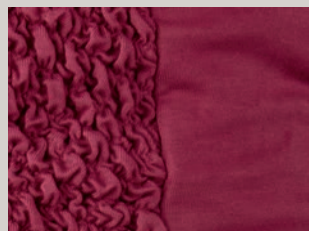


colour: wine red

Ellen's ELSA



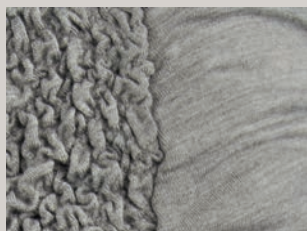
coral



wine red



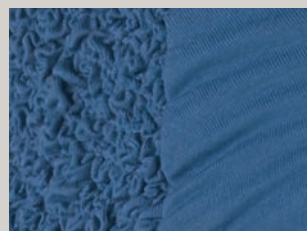
taupe



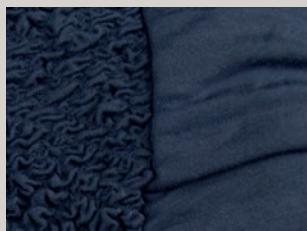
grey melange



lavender



jeans



marine



disty mussel



95% Bamboo Viscose,
5% Elastane

Style Tip:

ELSA (jeans) combined
with Hairpiece VANILLA
(bernstein).

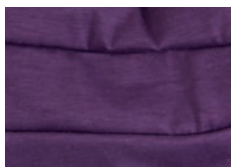


COMFORT CAP COLOURS:

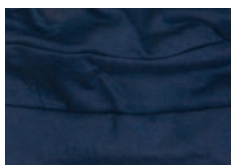
95% Cotton, 5% Elastane



flieder



lila



marine



jeansblau



marmor petrol



colour: flieder

Ellen's COMFORT CAP

CHIC COMFORT COLOURS:

colour: rot



rot



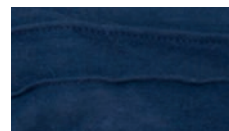
taupe



braun



schwarz



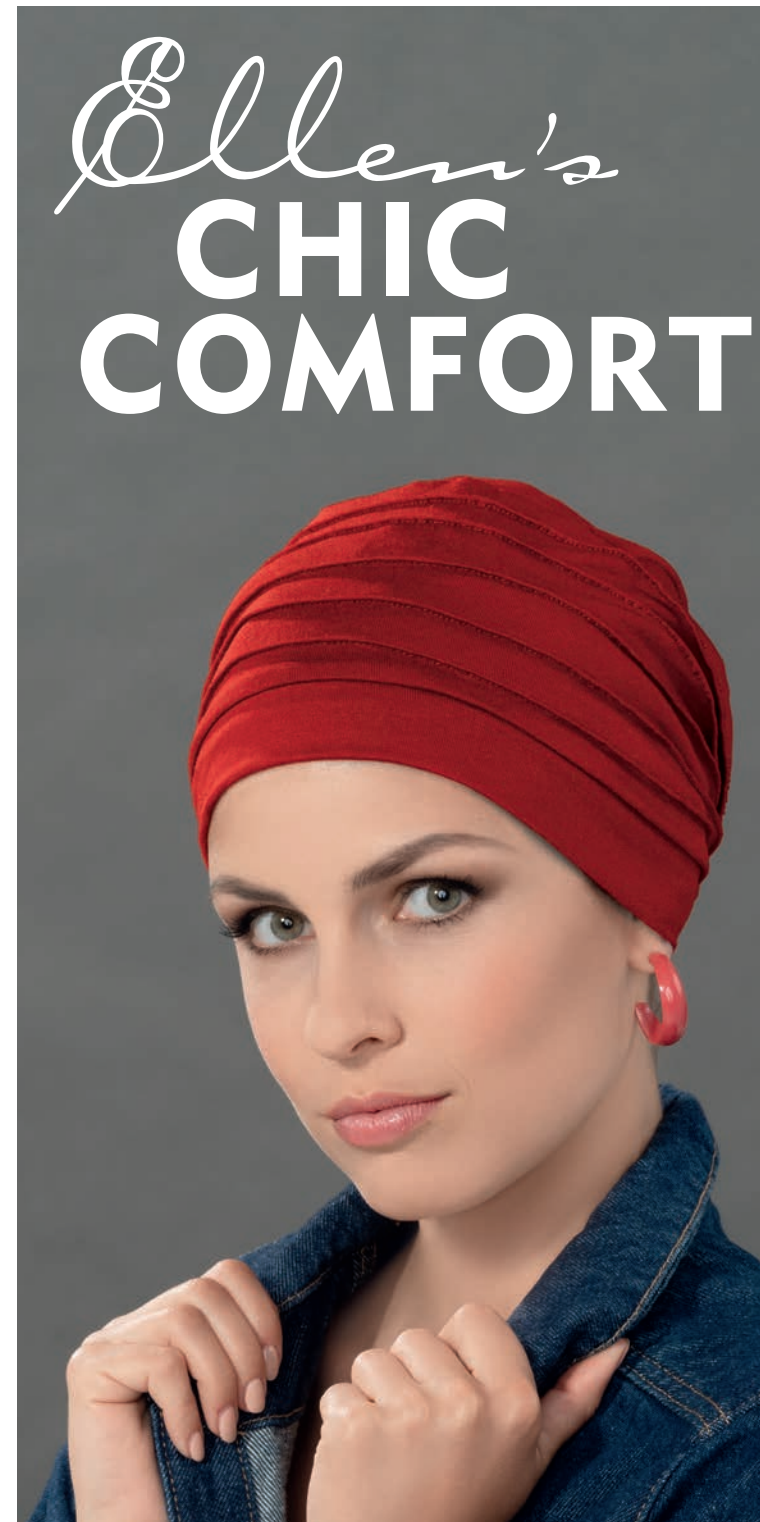
marine



rose



grau

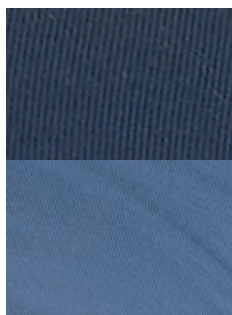


95% Cotton, 5% Elastane

colour: marine/khaki



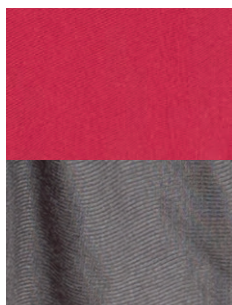
GO COLOURS:



marine/jeans



marine/khaki



grey/red



black/anthrazit



95% Bamboo Viscose,
5% Elastane

Colours



colour: grey/red



colour: black/anthrazit

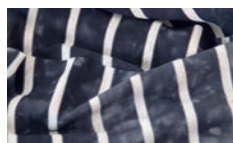
colour: marine/jeans

Reverse your style!

Ellen's GO



DEVINE COLOURS:



jeansblau gestreift ^A



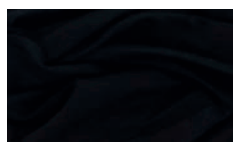
hellblau gestreift ^A



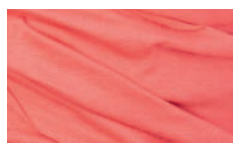
taupe gestreift ^A



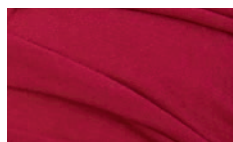
marine ^B / ^A



schwarz ^B



coral ^A



rot ^A

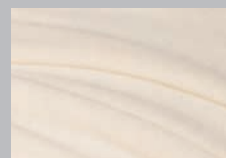


^A 95% Cotton, 5% Elastane / ^B 98% Cotton, 2% Elastane

Ellen's
DEVINE

Ellen's
NAMIDA

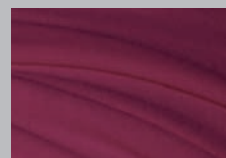
NAMIDA COLOURS:



vanilla



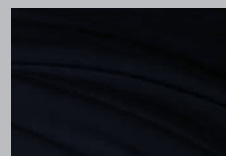
antik pink



burgundy



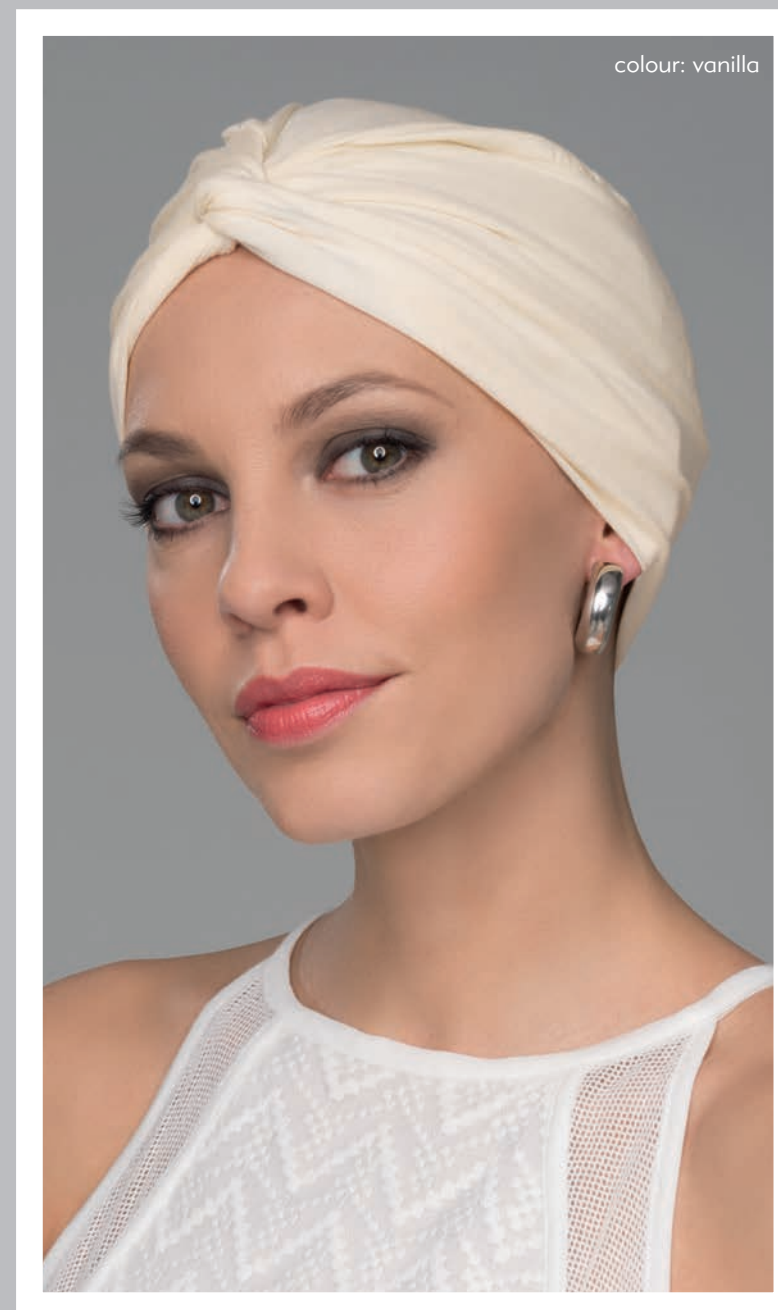
marine



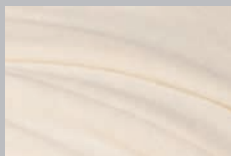
black



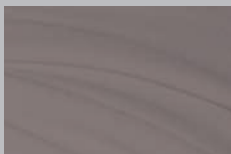
95% Bamboo Viscose,
5% Elastane



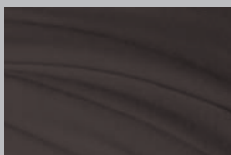
MINYA COLOURS:



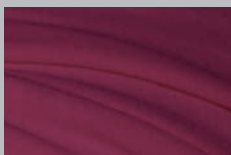
vanilla



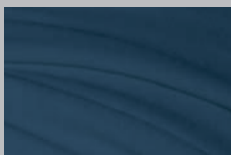
beige



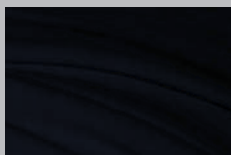
taupe



burgundy



jeans

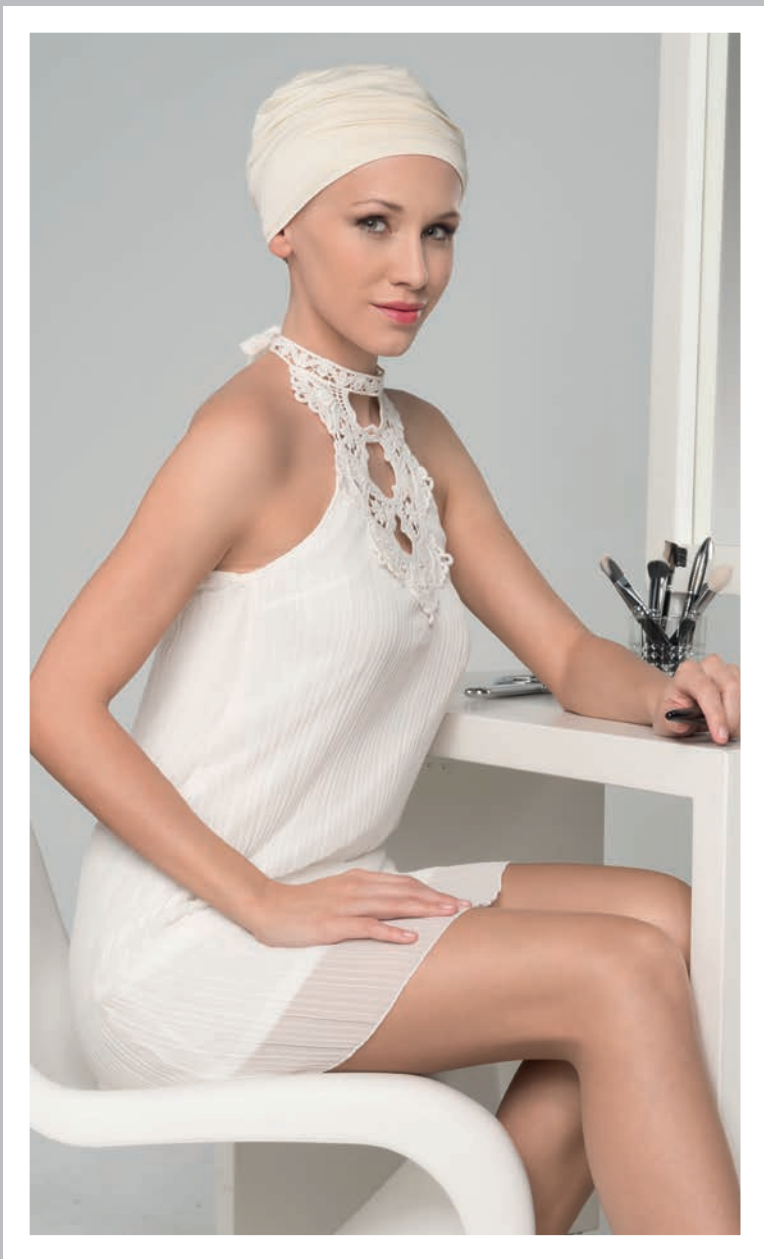


black



95% Bamboo Viscose,
5% Elastane

colour: vanilla

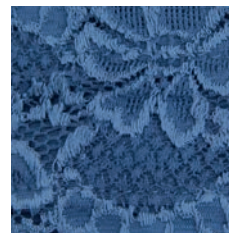


Ellen's MINYA

Ellen's KAYA STRETCH BAND

Available as a set.
Combine the colours
as you wish!

KAYA COLOURS:



jeans **A**



taupe **B**



beige **B**



Stretch band KAYA (jeans) combined with turban MINYA (vanilla).



KAYA

colour: jeans

- A** 95% Bamboo Viscose, 5% Elastane
- B** 95% Bamboo Viscose, 5% Lycra



95% Cotton,
5% Elastane

BANDS



colour: marine

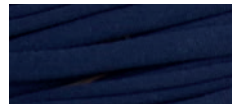
BANDS COLOURS:



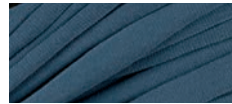
redmulti



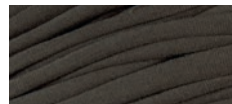
black grey



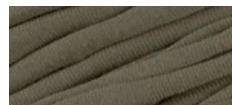
marine



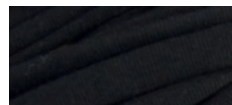
jeans



mocca



khaki



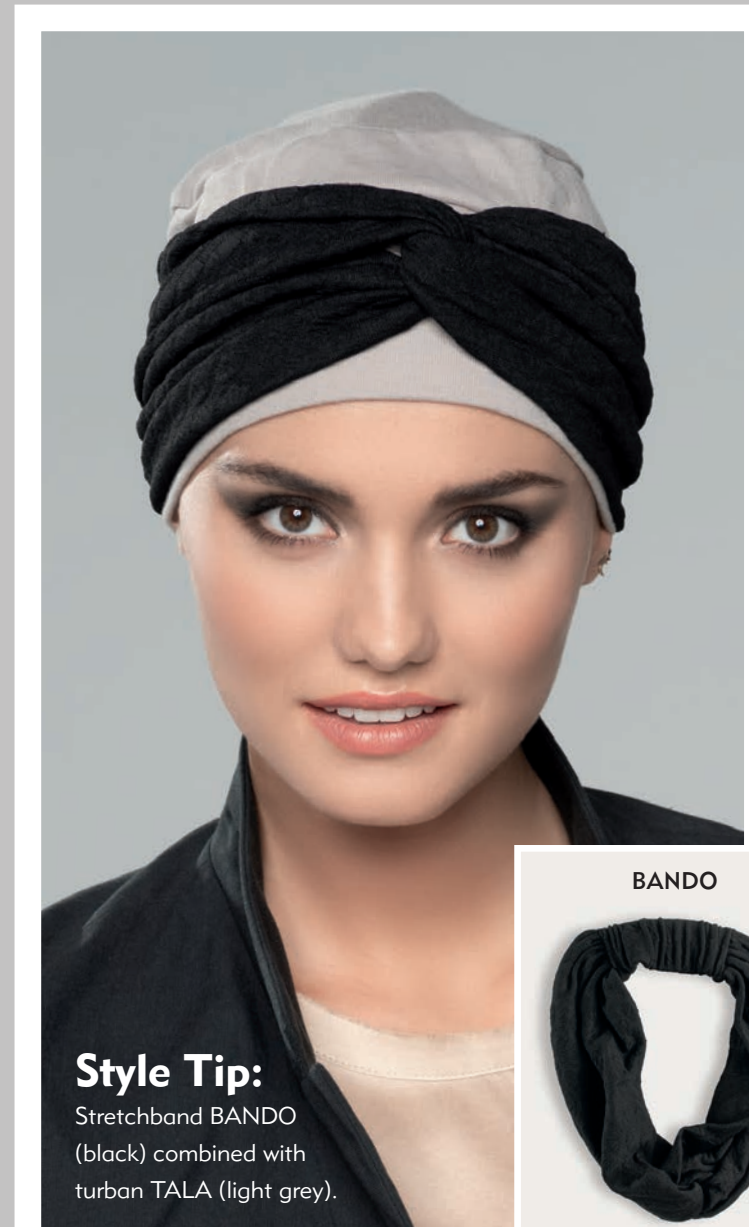
black



grey

Ellen's **BANDS** FLEXIBLE MULTI STRINGS

Ellen's **BANDO** STRETCH BAND



Style Tip:

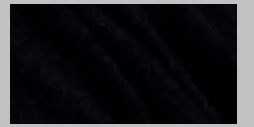
Stretchband BANDO
(black) combined with
turban TALA (light grey).

BANDO



colour: black

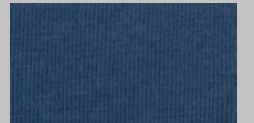
BANDO COLOURS:



black



marine



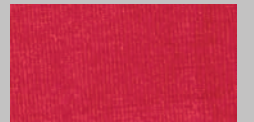
jeans



red



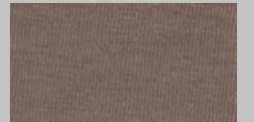
bordeaux



raspberry



grey



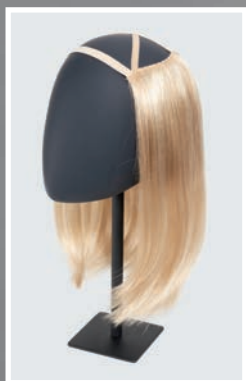
taupe

95% Cotton,
5% Elastane

Ellen's CAYENNE HAIRPIECE

Style Tip:

Hairpiece CAYENNE (sandy blonde)
combined with turban EASY COMFORT (grey)



CAYENNE COLOURS:

dark brown, medium brown,
choco brown, nut brown,
light blonde mix, sandy blonde,
pastel blonde, auburn



Style Tip:

Hairpiece VANILLA (light blonde)
combined with turban (MISU)



VANILLA COLOURS:

dark brown, medium brown,
choco brown, nut brown,
dark blonde, **light blonde**,
sandy blonde, pastel blonde,
auburn



Ellen's VANILLA HAIRPIECE

Ellen's MINT HAIRPIECE

Style Tip:

Hairpiece MINT (light blonde) combined with turban TALA (navy look).



HAIRPIECE MINT
8-12 cm



MINT COLOURS:

black, dark brown, medium brown, mahogany brown, light brown, nut brown, dark blonde, natural blonde, ginger blonde, gold blonde, **light blonde**, platinum blonde, pearl grey, light grey, silver grey



Style Tip:

Hairpiece SAGE (nut brown) combined with turban TALA (dark red).



HAIRPIECE SAGE
15-23 cm



SAGE COLOURS:

dark brown, medium brown, light brown, **nut brown**, dark blonde, natural blonde, ginger blonde, gold blonde, light blonde

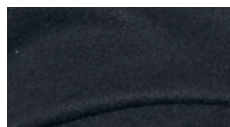


Ellen's SAGE HAIRPIECE

MUNA COLOURS:



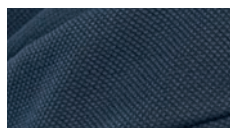
karo A / C



black A / C



grey black A / C



marine B / C

colour: black



colour: grey black



colour: karo

A Shell: 70 % Polyester, 25 % Viscose, 5 % Elastane

B Shell: 57 % Polyester, 40 % Cotton, 3 % Elastane

C Lining: 95 % Bamboo Viscose, 5 % Elastane

Ellen's MUNA



colour: marine

Ellen's PRO



PRO COLOUR:



grey

100% Acrylic

Ellen's GO

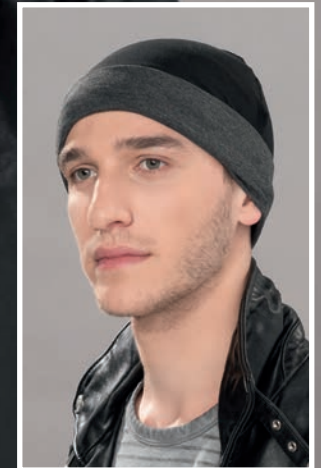
GO COLOUR:



black/anthrazit



95% Bamboo Viscose,
5% Elastane



Reverse your style!

Ellen's OVERVIEW

TURBANS, CAPS & HATS



Ama p. 20-21



Ama Fina p. 18-19



Anoki p. 42-43



Avani p. 36-37



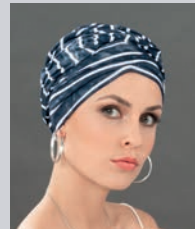
Capana p. 12-13



Chic Comfort p. 57



Comfort Cap p. 56



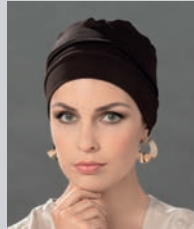
Devine p. 60



Dory p. 6-7



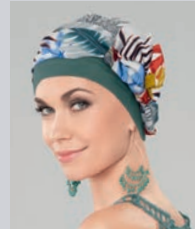
Easy Comf. p. 14-15



Easy Fit p. 16-17



Elsa p. 54-55



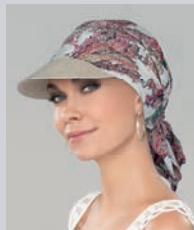
Garbo p. 44-45



Go p. 58-59



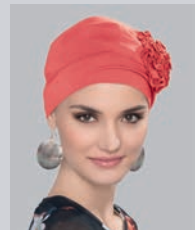
Kiona p. 52-53



Lonata p. 8-9



Lulu p. 48-49



Lyra p. 23



Magena p. 46-47



Malou p. 38-39



Mava p. 10-11



Meda p. 34-35



Minya p. 62



Misu p. 4-5



Mora p. 40-41



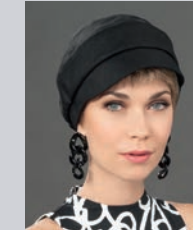
Muna p. 70-71



Namida p. 61



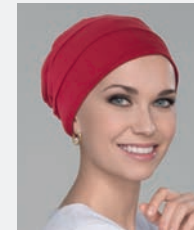
Paris p. 22



Tadea p. 50-51



Tala p. 32-33



Tala Bamboo p. 30-31

HEADWEAR
you love

HEADBANDS & HEADSCARFS



Bando p. 65



Bands p. 64



Kaya p. 63



Niabi p. 26-27

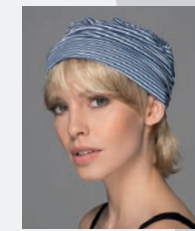


Toga p. 28-29

HAIRPIECES



Cayenne p. 66



Mint p. 68

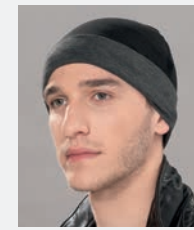


Sage p. 69



Vanilla p. 67

HEADWEAR FOR MAN



Go p. 73



Pro p. 72